

# Scanguns Configuration

## 3.1.3 Creating and Assigning Profiles on Scanguns

### Creating and Assigning Profiles

Liquid UI for Handheld Scanguns supports profiles, enabling you to create multiple sets of connection settings for a single device. Once a profile is connected, you can configure it for a particular Liquid UI or SAP server and also customize it to present a unique user experience. You can also associate particular users, connections, and transactions with a profile, streamlining the logon experience. To create a profile, please do the following.

1. In the Mobile logon pad, select a connection to associate with your new profile and then click the Properties button.
2. The Properties screen will display as shown below.

The screenshot shows the 'GuiXT Mobile Log' Properties screen. The title bar includes a Windows logo, the text 'GuiXT Mobile Log', and several icons: a lightbulb, a double-headed arrow, a signal strength indicator, a speaker, and an 'ok' button. The main content is organized into two sections: 'General' and 'Profile'. The 'General' section contains four input fields: 'Description', 'Application Server', 'SAProuter String', and 'System Number' (with the value '0'). The 'Profile' section contains a dropdown menu showing 'No profile selected', an 'Edit Profile...' button, and a 'Profile Management...' button. At the bottom of the screen are 'OK' and 'Cancel' buttons. A small 'LIQUID UI' logo is visible in the bottom right corner of the screen.

3. **Click** the Profile Management button to create a new profile.
4. The following screen will display. Click the New button.

# Scanguns Configuration

GuiXT Mobile Log

General

Description

Application Server

SAProuter String

System Number

Profile

No profile selected

5. The Profile Setting tab will appear as shown below.

GuiXT Mobile Log

Profile / Logon Setting

Profile Name

Optional Logon Screen

Start Transaction Code

Auto Logon

User Name  Password

Client Number  Language

Manual Logon (Default Settings)

User Name

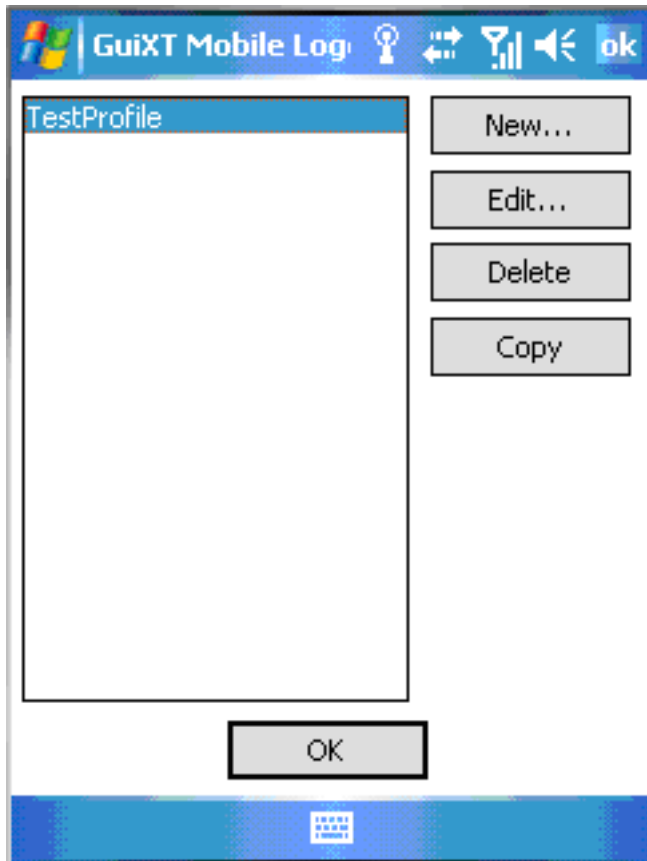
Client Number  Language

Profile Setting

# Scanguns Configuration

**Note:** There are a large number of settings that you can configure in the four tabs of the Profile Settings. Please see the Profile Settings appendix for a complete list and explanation of the available settings.

- When you are finished configuring the profile, click OK in the upper right corner to save the changes and refresh the SAP screen. It will now display as shown below:



- Click** the OK button to save the profile.
- To connect using the new profile, select the connection entry you associated with the profile, and then click the Logon button.

**Note:** To set the connection as the default, highlight the connection and click the Set/Unset Default Logon Connection button.

Unique solution ID: #1472  
Author: Shilpa Sahu  
Last update: 2019-06-21 01:10